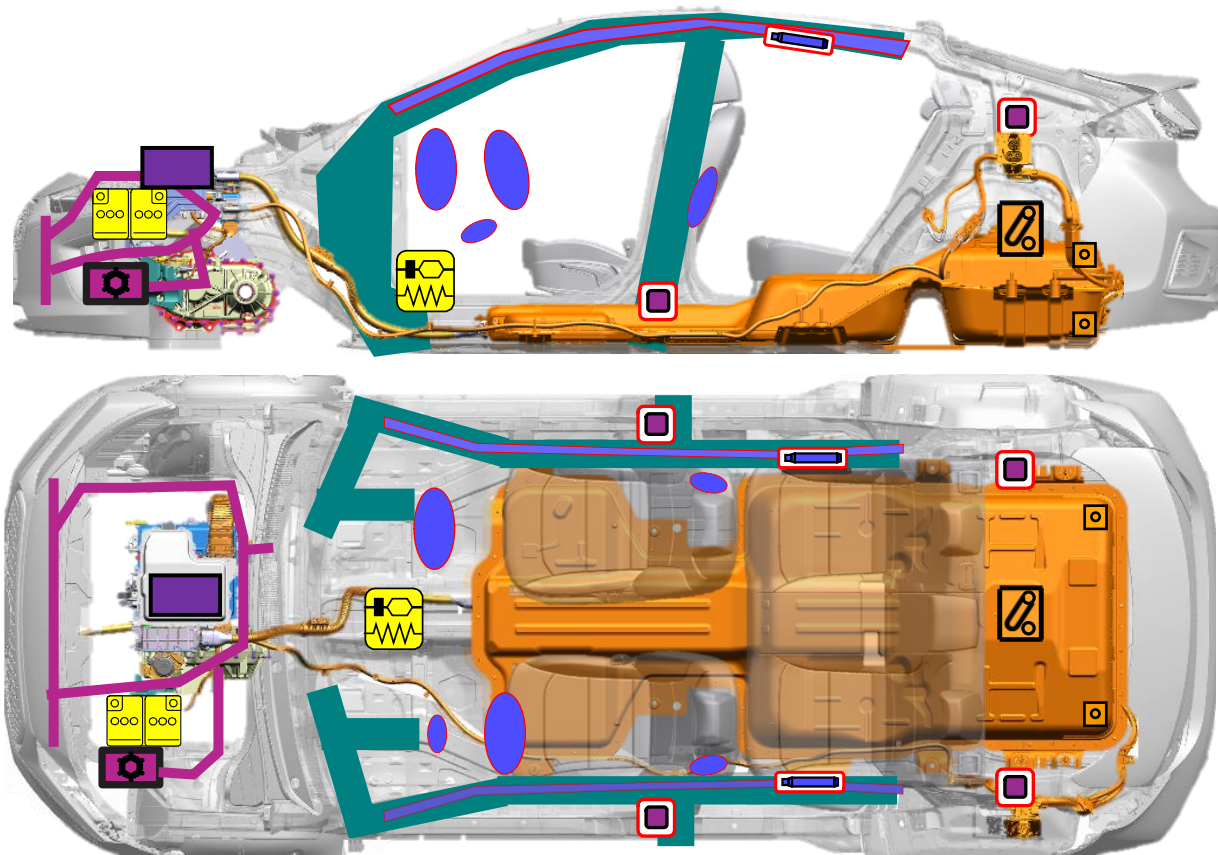









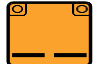




## Vehicle Identification/Recognition

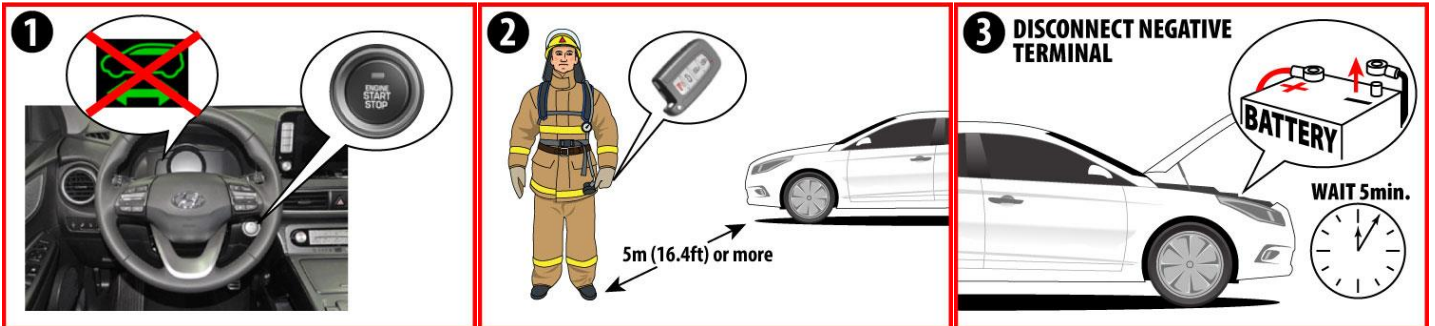


## Accessing Vehicle

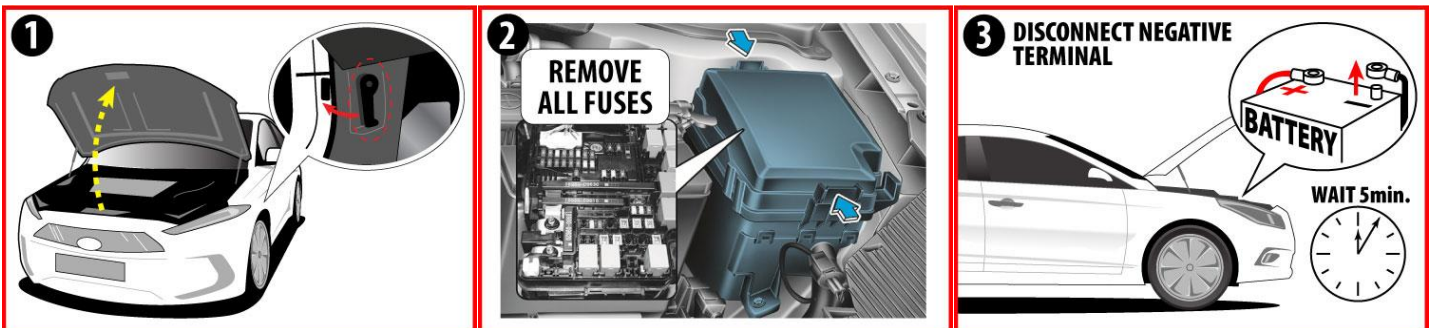


 Supplemental Restraint System Control Module (SRSCM)	 Airbag	 Airbag Gas Inflators
 High voltage cable	 12V Battery	 Air-conditioning line
 High Voltage Disconnect	 OBC (On – Board Charger)	 Ultra-High Strength Steel
 High Voltage Battery	 Air-conditioning component	 Seat belt pretensioner

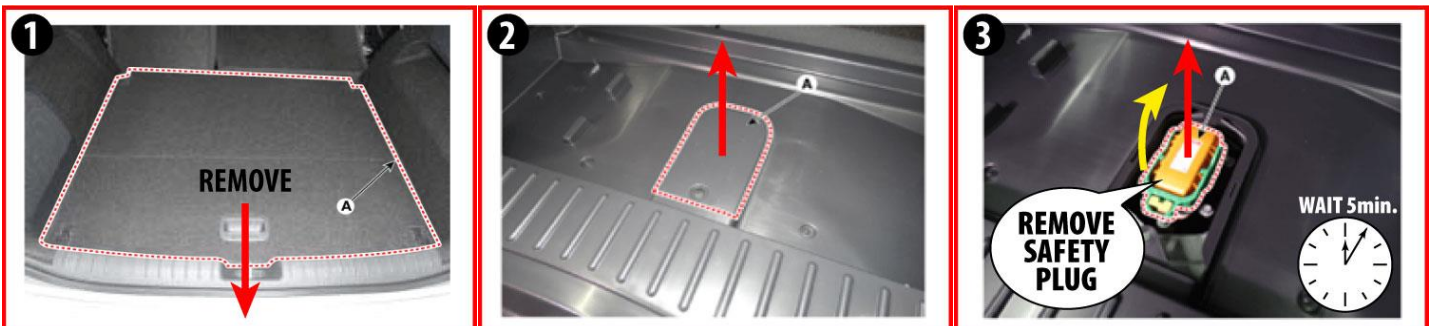
## Disabling Vehicle



**OR**



**OR**



## Towing Information

*Tow the vehicle using a flat bed or using wheel dollies. Never tow the vehicle with the front or rear wheels on the ground*



**For further information, please refer to the Emergency Response Guide (ERG).**

Applicable to IONIQ EV vehicles first sold in the United States.	ID. No.	Version No.	Page
	KMH-AE EV	01.2021.09	2 of 2