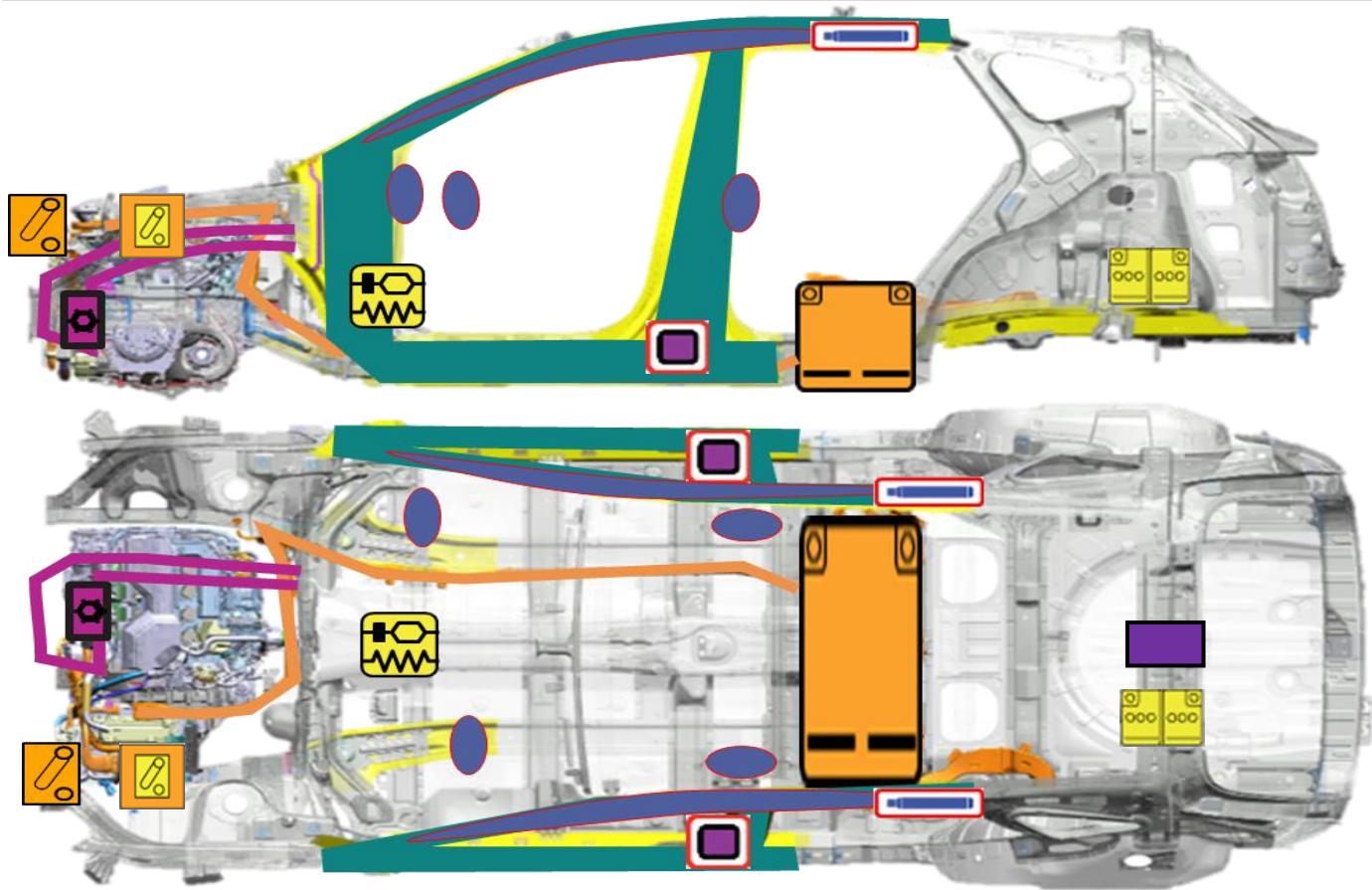














Identification / Recognition

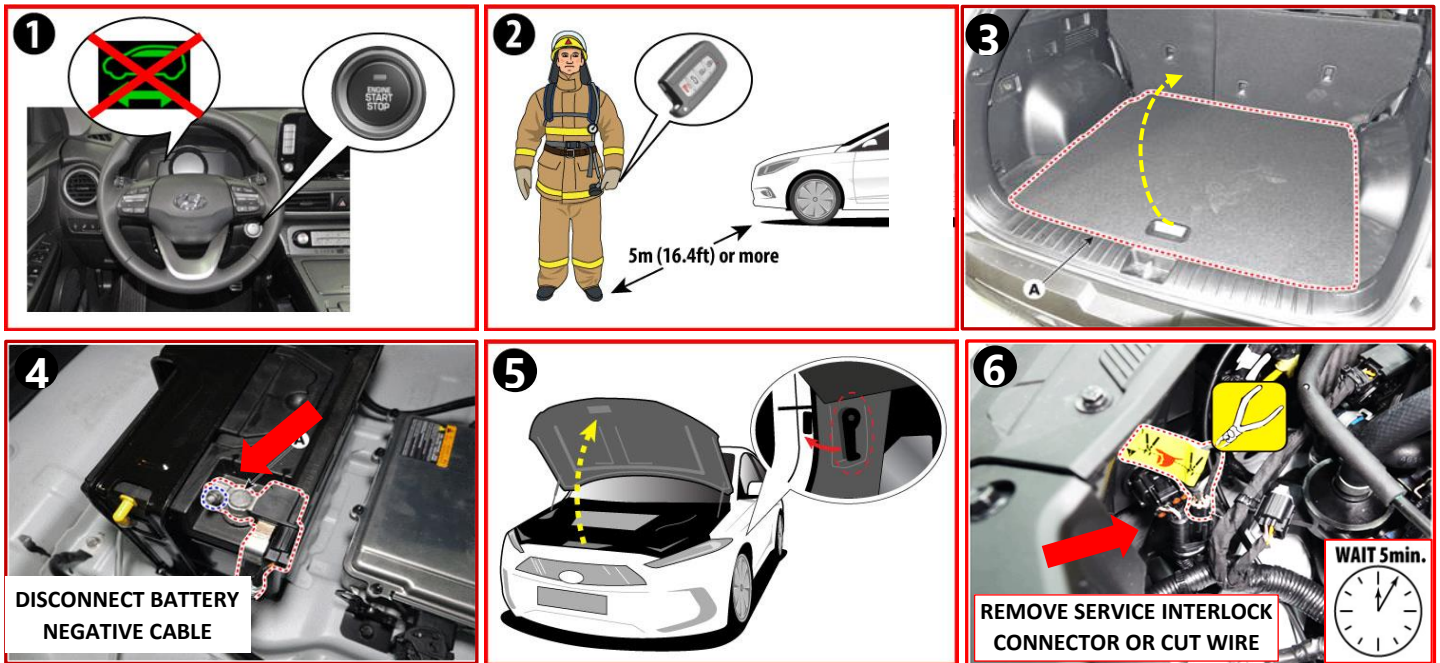


Accessing Vehicle

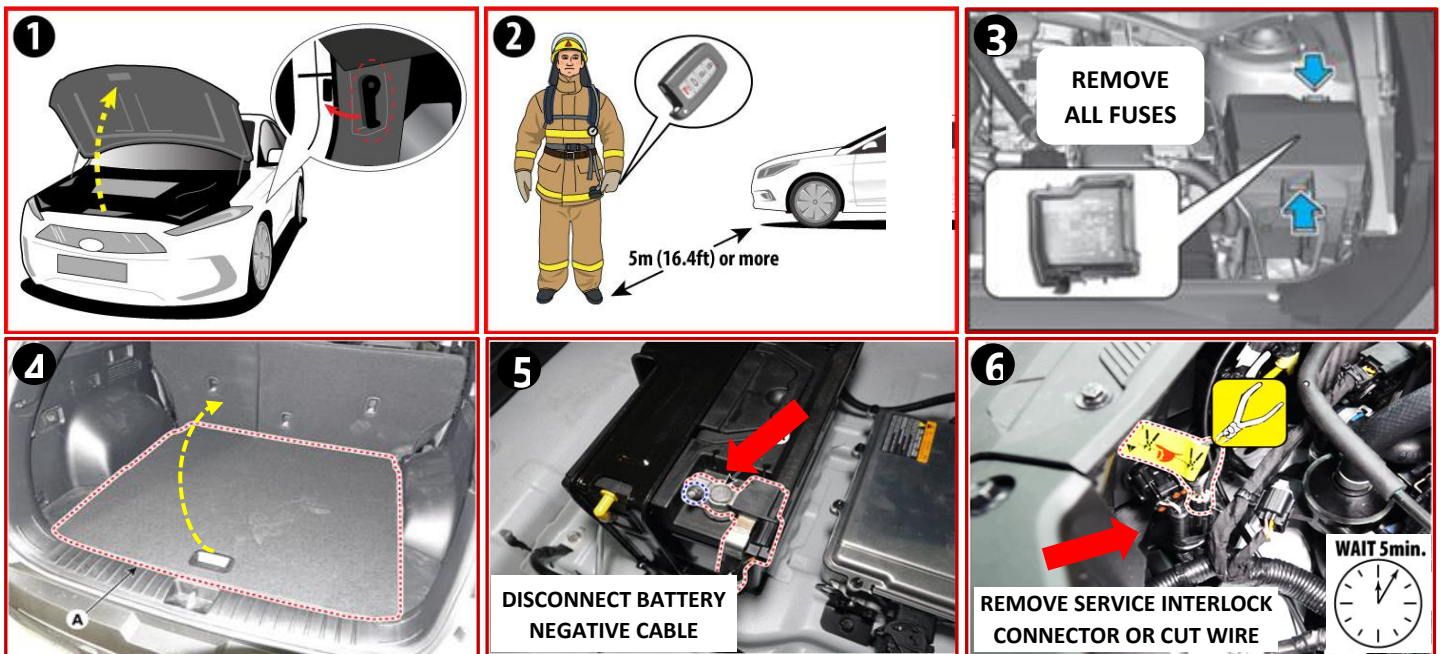


| | | |
|--|--|---|
|  Supplemental Restraint System Control Module (SRSCM) |  Airbag |  Airbag Gas Inflators |
|  High voltage cable |  12 Volt Battery |  Air-conditioning line |
|  Low voltage disconnect for high voltage |  OBC (On – Board Charger) |  Ultra-High Strength Steel |
|  High Voltage Battery |  Air-conditioning component |  Seat belt pretensioner |

Disabling Vehicle



OR



Vehicle Towing Information

Tow the vehicle using a flat bed or using wheel dollies. Never tow the vehicle with the front or rear wheels on the ground



For further information, please refer to the Emergency Response Guide (ERG).

| | | | |
|---|-------------------------|---------------------------|----------------|
| Applicable to Tucson PHEV vehicles first sold in the United States. | ID. No. KMH-NX4 PHEV | Version No. 01.2021.09 | Page 2 of 2 |
|---|-------------------------|---------------------------|----------------|